

# ACTIVITY SCHEDULE

## WRIGHT PANTHERS



2011-2012



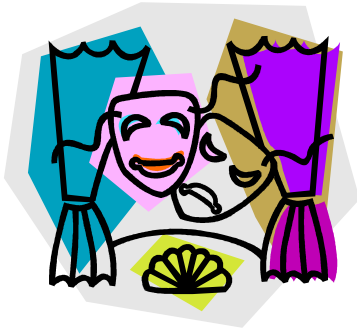
Wright Junior/Senior High School  
220 Wright Boulevard  
P.O. Box 490  
Wright, Wyoming 82732  
307-464-0140  
Hal Johnson, Principal

**REMEMBER TO  
“RALLY AROUND GOOD SPORTSMANSHIP”  
BY FOLLOWING THE  
WHSAA GOOD SPORT CODE**

---

- \* Show respect for all opponents by treating them as guests.
    - \* Show respect for the officials.
  - \* Understand and appreciate the rules of the contest.
    - \* Maintain self-control at all times.
    - \* Applaud the opponents’ performances.
      - \* Cheer for your team.
  - \* When you see a good sport in action, follow their lead and then thank them.
- 

**“SPORTSMANSHIP IS GOOD  
CITIZENSHIP IN ACTION”**



# HIGH SCHOOL SPORTS



# WRIGHT 2011 HIGH SCHOOL VOLLEYBALL



DATE	OPPONENT	PLACE	TIME
MON AUG 15	FIRST PRACTICE	HB GYM	8:00 AM
FAS AUG 26-27	RIVERTON INVITE - JV/VAR	RIVERTON	TBA
BAT AUG 27	NEWCASTLE INVITE - FROBH	NEWCASTLE	9:00 AM
TUE AUG 30	NEWCASTLE - 9 / JV / VAR	HOME	4 / 5 / 6 PM
FAS SEP 2-3	GILLETTE INVITE - JV/VAR	GILLETTE	TBA
THU SEP 8	MOORCROFT - 9 / JV / VAR	HOME	4 / 5 / 6 PM
FRI SEP 9	BIG HORN INV - JV	BIG HORN	TBA
BAT SEP 10	BIG HORN INV - VAR	BIG HORN	TBA
MON SEP 12	MIDWEST - BA / BB	HOME - REC	5 / 6 PM
FRI SEP 16	BIG HORN - 9 / JV / VAR	AWAY	3:30PM-3:00 / 5:30 PM
BAT SEP 17	LUSK INVITE - JV / VAR	LUSK	TBA
BAT SEP 17	TWIN SPRUCE INVITE - FROBH	GILLETTE	TBA
TUE SEP 20	SUNDANCE - 9 / JV / VAR	AWAY	4 / 5 / 6 PM
FRI SEP 23	TONGUE RIVER - 9 / JV / VAR ( <i>HOME COMING</i> )	HOME	5 / 4 / 6 PM
TUE SEP 27	GLENROCK - 9 / JV / VAR	AWAY	4 / 5 / 6 PM
FRI SEP 30	BIG HORN - 9 / JV / VAR	HOME	4 / 5 / 6 PM
MON OCT 3	MIDWEST - BA / BB	AWAY	5 / 6 PM
TUE OCT 4	SUNDANCE - 9 / JV / VAR ( <i>SENOR NIGHT</i> )	HOME	4 / 5 / 6 PM
THU OCT 13	MOORCROFT - 9 / JV / VAR	AWAY	4 / 5 / 6 PM
FRI OCT 14	TONGUE RIVER - 9 / JV / VAR	AWAY	3 / 4 / 5 PM
FAS OCT 21-22	REGIONAL TOURNAMENT	SHERIDAN	TBA
T/FRI OCT 27-29	STATE TOURNAMENT	CASPER	TBA

**WRIGHT  
2011  
HIGH SCHOOL  
FOOTBALL**



<b>DATE</b>	<b>OPPONENT</b>	<b>PLACE</b>	<b>TIME</b>
<b>MON AUG 15</b>	<b>FIRST PRACTICE</b>		<b>8:00 AM</b>
<b>SAT AUG 27</b>	<b>LUSK</b>	<b>AWAY</b>	<b>10:30AM</b>
<b>TUE AUG 30</b>	<b>MOORCROFT JV</b>	<b>HOME</b>	<b>6:00 PM</b>
<b>FRI SEP 2</b>	<b>LOVELL</b>	<b>AWAY</b>	<b>7:00 PM</b>
<b>TUE SEP 6</b>	<b>NEWCASTLE JV</b>	<b>HOME</b>	<b>4:30 PM</b>
<b>FRI SEP 9</b>	<b>WHEATLAND</b>	<b>HOME</b>	<b>7:00 PM</b>
<b>MON SEP 12</b>	<b>SUNDANCE JV</b>	<b>HOME</b>	<b>4:30 PM</b>
<b>FRI SEP 16</b>	<b>BIG HORN</b>	<b>AWAY</b>	<b>1:00 PM</b>
<b>MON SEP 19</b>	<b>GLENROCK JV</b>	<b>HOME</b>	<b>4:30 PM</b>
<b>FRI SEP 23</b>	<b>NEWCASTLE (HOMECOMING)</b>	<b>HOME</b>	<b>7:00 PM</b>
<b>FRI SEP 30</b>	<b>TONGUE RIVER</b>	<b>AWAY</b>	<b>2:00 PM</b>
<b>FRI OCT 7</b>	<b>GLENROCK</b>	<b>HOME</b>	<b>7:00 PM</b>
<b>SAT OCT 8</b>	<b>BIG HORN JV</b>	<b>HOME</b>	<b>10:30 AM</b>
<b>FRI OCT 14</b>	<b>MOORCROFT</b>	<b>AWAY</b>	<b>1:00 PM</b>
<b>SAT OCT 15</b>	<b>TONGUE RIVER JV</b>	<b>HOME</b>	<b>1:00 PM</b>
<b>FRI OCT 21</b>	<b>BURNS</b>	<b>HOME</b>	<b>7:00 PM</b>
<b>FRI OCT 28</b>	<b>QUARTER FINALS</b>	<b>TBA</b>	<b>TBA</b>
<b>SAT NOV 5</b>	<b>SEMI FINALS</b>	<b>TBA</b>	<b>TBA</b>

**F/S NOV 11/12**

**STATE CHAMPIONSHIPS**

**UNIV OF WYOMING**



# WRIGHT 2011 CROSS COUNTRY

**AUG**

**MON 15 FIRST PRACTICE 7<sup>TH</sup>-12<sup>TH</sup> 8AM**

**THU 25 @ LOVELL 7<sup>TH</sup>-12<sup>TH</sup> 4PM**

**SEPT**

**FRI 2 @ SHERIDAN 7<sup>TH</sup>-12<sup>TH</sup> TBA  
(VA HOSPITAL)**

**FRI 9 @ GILLETTE 7<sup>TH</sup>-12<sup>TH</sup> 2PM  
CAMPLEX**

**FRI 16 @ DOUGLAS 7<sup>TH</sup>-12<sup>TH</sup> 3PM**

**FRI 23 @ SARATOGA 7<sup>TH</sup>-12<sup>TH</sup> 2PM**

**OCT**

**SAT 1 RENTAS MEMORIAL 7<sup>TH</sup>-12<sup>TH</sup> 10AM  
(SENIOR RECOGNITION)**

**THU 6 JH @ GILLETTE 7<sup>TH</sup>-8<sup>TH</sup> 4PM  
(TS HOSTS @ CAMPLEX)**

**THU 13 @ HULETT 7<sup>TH</sup>-12<sup>TH</sup> 2PM**

**THU 20 TEAM DINNER 7<sup>TH</sup>-12<sup>TH</sup> 7PM  
(HS CAFETERIA)**

**SAT 22 STATE MEET 7<sup>TH</sup>-12<sup>TH</sup> TBA  
@ DOUGLAS**

**MON 31 AWARDS NIGHT 7<sup>TH</sup>-12<sup>TH</sup> TBA**



# WRIGHT 2011-12 HIGH SCHOOL WRESTLING



DATE	OPPONENT	PLACE	TIME
MON NOV 14	FIRST PRACTICE		6:15 AM
FRI NOV 18	WEIGHT CERTIFICATION	GILLETTE NORTH	5:30 PM
FAS DEC 2/3	CUSTER INVITATIONAL <sup>T</sup>	CUSTER, SD	2 P / 10 A
FAS DEC 9/10	LUSK INVITATIONAL <sup>T</sup>	LUSK	12 P / 9 A
SAT DEC 17	CHRISTMAS DUALS <sup>T</sup>	WRIGHT	9:00 AM
SAT JAN 7	NEW YEAR'S DUALS <sup>DN</sup>	WRIGHT	9:00 AM
FAS JAN 13/14	DON RUNNER MEMORIAL <sup>T</sup>	PAVILLION	12 P / 9 A
TUE JAN 17	MOORCROFT DUAL <sup>D</sup>	MOORCROFT	5:00 PM
FAS JAN 20/21	DOGGER INVITATIONAL <sup>T</sup>	LINGLE	11 A / 9 A
FRI JAN 27	GREYBULL / LOVELL DUALS <sup>DN</sup>	GREYBULL	5:00 PM
SAT JAN 28	GREYBULL MEMORIAL INVITE <sup>T</sup>	GREYBULL	10:00 AM
FAS FEB 3/4	RON THON INVITE <sup>T</sup>	RIVERTON	10 A / 9 A
FRI FEB 10	N. E. CONFERENCE DUALS <sup>DN</sup>	MOORCROFT	2:00 PM
FAS FEB 17/18	REGIONAL TOURNAMENT	SARATOGA	TBA / TBA
FAS FEB 24/25	STATE TOURNAMENT	CASPER	9 AM / 9 AM

**2011-2012  
DEVELOPMENTAL GIRLS BASKETBALL**



<b>DATE</b>	<b>OPPONENT</b>	<b>PLACE</b>	<b>TIME</b>
<b>MON NOV 14</b>	<b>FIRST PRACTICE</b>	<b>WRIGHT</b>	<b>TBA</b>
<b>THUR DEC 1</b>	<b>MOORCROFT</b>	<b>MOORCROFT</b>	<b>6:30</b>
<b>MON DEC 5</b>	<b>UPTON</b>	<b>UPTON</b>	<b>4:00</b>
<b>TURS DEC 13</b>	<b>MIDWEST</b>	<b>WRIGHT</b>	<b>5:30</b>
<b>THUR DEC 15</b>	<b>TWIN SPRUCE</b>	<b>TWIN SPRUCE</b>	<b>5:30</b>
<b>THUR JAN 5</b>	<b>MIDWEST</b>	<b>MIDWEST</b>	<b>4:00</b>
<b>MON JAN 9</b>	<b>HULETT</b>	<b>WRIGHT</b>	<b>5:30</b>
<b>TURS JAN 17</b>	<b>TWIN SPRUCE</b>	<b>WRIGHT</b>	<b>4:00</b>
<b>MON JAN 23</b>	<b>NEWCASTLE</b>	<b>WRIGHT</b>	<b>4:00</b>
<b>MON JAN 30</b>	<b>NEWCASTLE</b>	<b>NEWCASTLE</b>	<b>5:30</b>
<b>TURS FEB 7</b>	<b>HULETT</b>	<b>HULETT</b>	<b>5:30</b>
<b>MON FEB 13</b>	<b>SAGE VALLEY</b>	<b>WRIGHT</b>	<b>4:00</b>

## 2011-2012 DEVELOPMENTAL BOYS BASKETBALL



DATE		OPPONENT	PLACE	TIME
MON	NOV 14	FIRST PRACTICE	WRIGHT	TBA
THUR	DEC 1	MOORCROFT	MOORCROFT	5:00
MON	DEC 5	DIPTON	DIPTON	5:30
TUES	DEC 13	MIDWEST	WRIGHT	4:00
THUR	DEC 15	TWIN SPRUCE	TWIN SPRUCE	4:00
THUR	JAN 5	MIDWEST	MIDWEST	5:30
MON	JAN 9	HULETT	WRIGHT	4:00
TUES	JAN 17	TWIN SPRUCE	WRIGHT	5:30
MON	JAN 23	NEWCASTLE	WRIGHT	5:30
MON	JAN 30	NEWCASTLE	NEWCASTLE	4:00
TUES	FEB 7	HULETT	HULETT	4:00
MON	FEB 13	SAGE VALLEY	WRIGHT	5:30



**2011-2012**  
**JV/VARSITY GIRLS BASKETBALL**

<u>DATE</u>	<u>OPPONENT</u>	<u>PLACE</u>	<u>TIME</u>
MON NOV 14	FIRST PRACTICE	WRIGHT	TBA
FRI-SAT DEC 2-3	HANNA TOURN	HANNA	TBA
TURS DEC 6	GLENROCK	WRIGHT	4:00/5:30
FRI-SAT DEC 9-10	COAL MINERS CLASSIC	GLENROCK	TBA
FRI-SAT DEC 16-17	EAST/WEST TODEN	WHS/WR	TBA
FRI JAN 6	REG HOEN	REG HOEN	4:00/5:30
SAT JAN 7	LOVELL	SHERIDAN COLLEGE	5:00/6:30
FRI JAN 13	SUNDANCE	SUNDANCE	2:30/4:00
SAT JAN 14	BURNS	BURNS	1:00/2:30
THUR JAN 19	MOORCROFT	MOORCROFT	4:00/5:30
FRI JAN 20	REG HOEN	WRIGHT	4:00/7:00
SAT JAN 21	WRIGHT INVITE TODEN (JV ONLY)	WRIGHT	TBA
FRI JAN 27	TYNGUE RIVER	WRIGHT	3:30/5:00
THUR FEB 2	MOORCROFT	WRIGHT	4:00/7:00
FRI FEB 3	UPTON	UPTON	4:00/5:30
FRI FEB 10	SUNDANCE	WRIGHT	4:00/5:30
SAT FEB 11	TYNGUE RIVER	TYNGUE RIVER	1:00/2:30
THU FEB 16	HULETT	HULETT	3:30/5:00
FRI FEB 17	LUSK	WRIGHT	4:00/7:00
THU-FRI-SAT FEB 23-25	REGIONALS	Torrington	TBA
THU-SAT MARCH 1-3	STATE	CASPER	TBA



## 2011-2012 JV/VARSITY BOYS BASKETBALL

<u>DATE</u>	<u>OPPONENT</u>	<u>PLACE</u>	<u>TIME</u>
MON NOV 14	FIRST PRACTICE	WRIGHT	TBA
FRI-SAT DEC 2-3	ENCAMPMENT TOURN	ENCAMPMENT	TBA
TURS DEC 6	GLENROCK	GLENROCK	4:00/5:30
FRI-SAT DEC 9-10	COAL MINERS CLASSIC	WRIGHT	TBA
FRI-SAT DEC 16-17	EAST/WEST TOURN	WIHS/WR	TBA
FRI IAN 6	HIG HORN	HIG HORN	4:00/7:00
SAT IAN 7	LOVELL	SHERIDAN COLLEGE	3:30/8:00
FRI IAN 13	SUNDANCE	SUNDANCE	2:30/5:30
SAT IAN 14	BURNS	BURNS	1:00/4:00
THUR IAN 19	MOORCROFT	MOORCROFT	4:00/7:00
FRI IAN 20	HIG HORN	WRIGHT	4:00/5:30
SAT IAN 21	WEIGHT INVITE TOURN (JV ONLY)	WRIGHT	TBA
FRI IAN 27	TONGUE RIVER	WRIGHT	3:30/6:30
THUR FEB 2	MOORCROFT	WRIGHT	4:00/5:30
FRI FEB 3	UPTON	UPTON	4:00/7:00
FRI FEB 10	SUNDANCE	WRIGHT	4:00/7:00
SAT FEB 11	TONGUE RIVER	TONGUE RIVER	1:00/4:00
THU FEB 16	HULETT	HULETT	3:30/6:30
FRI FEB 17	LUSK	WRIGHT	4:00/5:30
THU-FRI-SAT FEB 23-25	REGIONALS	Torrington	TBA
THU-SAT MARCH 1-3	STATE	CASPER	TBA



# DRAMA

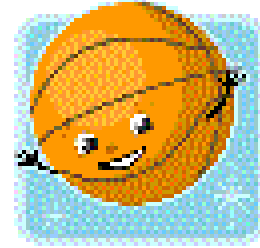
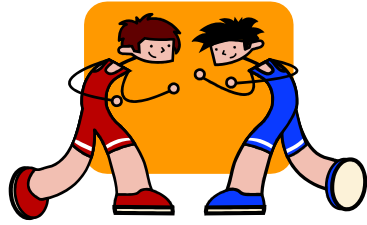
## JUNIOR HIGH

MON	Sept. 12	Musical Auditions 3:30-5:00pm or 6:00-7:30pm
TUE	Sept. 13	Musical Auditions 6:00-7:30pm
MON-TUE-THURS	Oct. 17-18-20	Musical Dress Rehearsal 5:00-8:00pm
MON-TUES	Oct 24-25	Musical at Town Hall 7:00pm
MON	Jan. 9	Spring Play Auditions 3:30-5:00pm or 6:00-7:30pm
TUE	Jan. 10	Spring Play Auditions 6:00-7:30pm
MON-TUE-THURS	Feb.6-7-9	Spring Play Dress Rehearsal 5:00-8:00pm
MON-TUE	Feb.13-14	Spring Play at Town Hall 7:00pm

## HIGH SCHOOL

MON-TUE	Sept. 12-13, 26-27	State Drama Auditions 7:30-9:00pm
MON-TUE-THURS	Nov. 14-15-17	State Drama Dress Rehearsal 5:00-10:00pm
MON-TUE	Nov. 21-22	State Drama Performance @ Town Hall 7:00pm
WED-THURS-FRI-SAT	Nov. 30/Dec 1-2-3	State Drama Tournament @ Central WY College Riverton, WY
WED	Nov. 30	Load out for State 12:30pm
SAT	Dec. 3	Load in from State 11:30pm
MON-TUE	Jan. 23-24	Spring Musical Auditions 7:30-9:00pm
MON-TUE-THURS	March 19-20-22	Musical Dress Rehearsal 5:00-10:00pm
FRI-SAT-MON-TUE	March 23-24-26-27	Spring Musical @ Town Hall 7:00pm

All rehearsals will be held on Monday, Tuesday, and Thursday at Town Hall



# JUNIOR HIGH SPORTS



# WRIGHT 2011 JR HIGH SCHOOL VOLLEYBALL



DATE	OPPONENT	PLACE	TIME
MON AUG 17	FIRST PRACTICE		10:00 AM
TUE AUG 30	SUNDANCE	HOME - REC	4 / 5 PM
THU SEP 8	SAGE VALLEY 'B'	HOME - REC	4 / 5 PM
SAT SEP 10	JH7 INVITE (LPT, HUL, TB, BV, BH, KAY, MBD, WRT)	HOME - HH	9:00 AM
THU SEP 15	UPTON	UPTON	4 / 5 PM
SAT SEP 17	7 <sup>TH</sup> & 8 <sup>TH</sup> GRADE INVITE	DOUGLAS	8:00 AM
TUE SEP 20	MOORCROFT	HOME - REC	4 / 5 PM
THU SEP 22	TRIANGULAR (NEW, LPT, WRT)	HOME - REC/OW	NEW 4/5 UPT 6/5
SAT SEP 24	8 <sup>TH</sup> GRADE INVITE	GILLETTE SOUTH CAMPUS	8:00 AM
TUE SEP 27	HULETT	AWAY	4 / 5 PM
SAT OCT 1	7 <sup>TH</sup> GRADE INVITE	SAGE VALLEY	9:00 AM
MON OCT 3	TWIN SPRUCE 'B'	HOME - REC	4 / 5 PM
THU OCT 6	TRIANGULAR (HUL, MOR, WRT)	HULETT	HUL 4 PM MOR 5 PM
SAT OCT 8	8 <sup>TH</sup> GRADE INVITE	BUFFALO	TBA
TUE OCT 11	NEWCASTLE	NEWCASTLE	4 / 5 PM
SAT OCT 15	DISTRICTS	WRIGHT - HMCW	9:00 AM

**WRIGHT  
2011  
JR HIGH SCHOOL  
FOOTBALL**



<b>DATE</b>	<b>OPPONENT</b>	<b>PLACE</b>	<b>TIME</b>
<b>MON AUG 15</b>	<b>FIRST PRACTICE</b>		<b>10:00 AM</b>
<b>TUE AUG 30</b>	<b>SUNDANCE</b>	<b>AWAY</b>	<b>4:00 PM</b>
<b>TUE SEP 6</b>	<b>SAGE VALLEY 7 'RED'</b>	<b>AWAY</b>	<b>4:00 PM</b>
<b>TUE SEP 13</b>	<b>UPTON</b>	<b>HOME</b>	<b>4:30 PM</b>
<b>TUE SEP 20</b>	<b>MOORCROFT</b>	<b>HOME</b>	<b>4:30 PM</b>
<b>SAT SEP 24</b>	<b>DOUGLAS 7</b>	<b>AWAY</b>	<b>10:30 AM</b>
<b>TUE SEP 27</b>	<b>HULETT (6 MAN)</b>	<b>AWAY</b>	<b>4:30 PM</b>
<b>SAT OCT 8</b>	<b>BIG HORN</b>	<b>HOME</b>	<b>NOON</b>
<b>TUE OCT 11</b>	<b>NEWCASTLE</b>	<b>HOME</b>	<b>4:30 PM</b>



# WRIGHT 2011 JR HIGH SCHOOL WRESTLING



DATE	OPPONENT	PLACE	TIME
MON OCT 17	FIRST PRACTICE		9:30 PM
BAT OCT 29	GILLETTE JACKSON MEMORIAL	TWIN SPRUCE	9:00 AM
THU NOV 3	QUADRANGULAR (MOOR, UPT, KAY, WRT)	WRIGHT	4:30 PM
BAT NOV 5	SHERIDAN INVITATIONAL	SHERIDAN	9:00 AM
THU NOV 10	WRIGHT INVITE	WRIGHT	8:30 PM
TUE NOV 16	QUADRANGULAR (SUN, NEWC, LEAD-SD, WRT)	SUNDANCE	4:30 PM
BAT NOV 19	STURGIS SD INVITE	STURGIS BROWN HS	10:00 AM
MON NOV 21	QUADRANGULAR (SUN, HUL, UPT, WRT)	HULETT	4:30 PM
THU DEC 1	TRIANGULAR (WRT, KAY, BUF)	BUFFALO	4:30 PM
BAT DEC 3	RAPID CITY INVITATIONAL	CENTRAL HS	9:00 AM
TUE DEC 6	DOUBLE DUAL (T.S., S.V.)	SAGE VALLEY	4:00 PM
MON DEC 12	NEWCASTLE DUAL	NEWCASTLE	4:00 PM
FRI DEC 16	NE CONFERENCE TOURNAMENT (A WEIGHT CLASS MUST BE MADE FOR THIS MEET!)	SUNDANCE	8:00 & 9:00 AM



**2011  
JUNIOR HIGH GIRLS BASKETBALL**

<b>DATE</b>	<b>OPPONENT</b>	<b>PLACE</b>	<b>TIME</b>
<b>MGN OCT 17</b>	<b>FIRST PRACTICE</b>	<b>WRIGHT</b>	<b>TBA</b>
<b>THUR OCT 27</b>	<b>MOORCROFT</b>	<b>WRIGHT</b>	<b>4:00/5:00</b>
<b>SAT OCT 28</b>	<b>7<sup>TH</sup> TOURNAMENT</b>	<b>WRIGHT</b>	<b>TBA</b>
<b>SAT OCT 28</b>	<b>8<sup>TH</sup> TOURNAMENT</b>	<b>BUFFALO</b>	<b>TBA</b>
<b>TURS NOV 1</b>	<b>SUNDANCE</b>	<b>SUNDANCE</b>	<b>4:00/5:00</b>
<b>SAT NOV 5</b>	<b>WRIGHT INVITE</b>	<b>WRIGHT</b>	<b>TBA</b>
<b>MGN NOV 7</b>	<b>SAGE VALLEY</b>	<b>SAGE VALLEY</b>	<b>4:00/5:00</b>
<b>SAT NOV 12</b>	<b>7<sup>TH</sup> QUAD</b>	<b>BUFFALO</b>	<b>TBA</b>
<b>SAT NOV 12</b>	<b>8<sup>TH</sup> QUAD</b>	<b>NEWCASTLE</b>	<b>TBA</b>
<b>TURS NOV 15</b>	<b>UPTON</b>	<b>UPTON</b>	<b>4:00/5:00</b>
<b>SAT NOV 19</b>	<b>7<sup>TH</sup> TOURNAMENT</b>	<b>DOUGLAS</b>	<b>TBA</b>
<b>SAT NOV 19</b>	<b>8<sup>TH</sup> TOURNAMENT</b>	<b>WHEATLAND</b>	<b>TBA</b>
<b>MGN NOV 21</b>	<b>TWIN SPRUCE</b>	<b>WRIGHT</b>	<b>4:00/5:00</b>
<b>TURS NOV 28</b>	<b>HULETT</b>	<b>HULETT</b>	<b>4:00/5:00</b>
<b>FRI DEC 2</b>	<b>7<sup>TH</sup> CARTWRIGHT TOURNAMENT</b>	<b>DEADWOOD</b>	<b>TBA</b>
<b>SAT DEC 3</b>	<b>8<sup>TH</sup> CARTWRIGHT TOURNAMENT</b>	<b>DEADWOOD</b>	<b>TBA</b>
<b>TURS DEC 6</b>	<b>TWIN SPRUCE</b>	<b>TWIN SPRUCE</b>	<b>4:00/5:00</b>
<b>MGN DEC 12</b>	<b>NEWCASTLE</b>	<b>WRIGHT</b>	<b>4:00/5:00</b>
<b>FRI DEC 16</b>	<b>DISTRICT TOURNAMENT</b>	<b>MOORCROFT</b>	<b>TBA</b>





## 2012 JUNIOR HIGH BOYS BASKETBALL

<u>DATE</u>	<u>OPPONENT</u>	<u>PLACE</u>	<u>TIME</u>
TURS IAN 3	FIRST PRACTICE	WRIGHT	TBA
THU IAN 12	Upton (NON-CONFERENCE)	UPTON	4:00/5:00
THUR IAN 19	SUNDANCE	SUNDANCE	4:00/5:00
SAT IAN 21	DOUGLAS	DOUGLAS	9:00/10:00 AM
MON IAN 23	TWIN SPRUCE	WRIGHT	4:00/5:00
THUR IAN 26	SAGE VALLEY	SAGE VALLEY	4:00/5:00
SAT IAN 28	7 <sup>TH</sup> TOURNAMENT	BUFFALO	TBA
SAT IAN 28	8 <sup>TH</sup> TOURNAMENT	NEWCASTLE	TBA
TURS IAN 31	UPTON	WRIGHT	4:00/5:00
SAT FEB 4	7 <sup>TH</sup> QUAD	DOUGLAS	TBA
SAT FEB 4	8 <sup>TH</sup> QUAD	BUFFALO	TBA
TURS FEB 7	MOORCROFT	WRIGHT	4:00/5:00
SAT FEB 11	7 <sup>TH</sup> QUAD	NEWCASTLE	TBA
SAT FEB 11	8 <sup>TH</sup> QUAD	WRIGHT	TBA
TURS FEB 14	HULETT	WRIGHT	4:00/5:00
FRI FEB 17	7 <sup>TH</sup> & 8 <sup>TH</sup> QUAD	MOORCROFT	3:00
THUR FEB 23	TWIN SPRUCE	TWIN SPRUCE	4:00/5:00
TURS FEB 28	NEWCASTLE	NEWCASTLE	4:00/5:00
MON-TUES MAR 5-6	DISTRICT TOURNAMENT	UPTON	TBA





WRIGHT JUNIOR SENIOR HIGH SCHOOL

# TOGETHER

## WE WILL ACCOMPLISH MORE

*"LET'S PUT OUR MINDS TOGETHER AND SEE WHAT LIFE WE CAN MAKE FOR OUR CHILDREN." - SITTING BULL*

### TEAM EFFORT

*"YOU GET THE BEST OUT OF OTHERS WHEN YOU GIVE THE BEST OF YOURSELF." ~ H. FIRESTONE*

### INDIVIDUAL ACCOUNTABILITY

*"TO GIVE LESS THAN YOUR BEST IS TO SACRIFICE THE GIFT." ~ STEVE PREFONTAINE*

### CHOICES AND CONSEQUENCES

*"WHAT YOU RECEIVE IN LIFE IS A DIRECT REFLECTION OF CHOICES YOU HAVE MADE IN THE PAST." ~ CHARLES AUZQUI*

### FOCUS ON THE FUTURE

*"LIVE YOUR LIFE SO THAT WHEN PEOPLE THINK OF FAIRNESS, CARING, INTEGRITY... THEY THINK OF YOU." ~ ANONYMOUS*

#### WE WILL:

- COMMUNICATE
- ASPIRE
- COMMIT
- PARTICIPATE
- CARE

## STUDENTS

#### WE WILL:

- COMMUNICATE
- SUPPORT
- LEAD
- TRUST
- CARE

## PARENTS

#### WE WILL:

- COMMUNICATE
- INITIATE
- COOPERATE
- SUPPORT
- CARE

## COMMUNITY

#### WE WILL:

- COMMUNICATE
- PROVIDE
- ENCOURAGE
- RESPECT
- CARE

## STAFF

*"PERFECTION IS NOT ATTAINABLE; BUT, IF YOU CHASE PERFECTION, YOU CATCH EXCELLENCE." ~ VINCE LOMBARDI*



## SCHOOL SONG

Hail to the mighty Panthers  
Hail to our conquering heroes  
We are the mighty Panthers  
Here to fight with might.  
We are the Black and Gold  
We are the brave and bold  
We are the mighty Panthers  
Victory tonight!

P - A - N - T - H - E - R - S



Panthers!  
Panthers!

GO

FIGHT

WIN!

